



LIVE THE  
FUSION  
LIFE

आयवराट

DADAR WEST

CHINTAMANI LAND & HOUSING LLP

A MASTERPIECE BY



Corporate Add.: Chintamani Land And Housing LLP, 60-62, Mirza Street, Mumbai - 400003.

Site Add.: Palan Sojpal Compound, 'B' Block, S.K Bole Road, Dadar West, Mumbai - 400028.

+91 8828 428446 | ARYAVRAT - MahaRERA No.: P51900024338 | [www.maharera.mahaonline.gov.in](http://www.maharera.mahaonline.gov.in)

The Project has been funded for Construction Finance by





EMBRACE  
UBER CHIC  
WAY OF LIFE

HOLD ON TO  
YOUR ROOTS

ELEVATE TO A  
HIGHER STATE  
OF BEING



Image for representation purpose only

INDIAN HEART  
WESTERN BEAT

LIVE THE FUSION LIFE  
WHERE CULTURALLY-RICH LOCATION  
BLENDS IN INTERNATIONAL  
LIVING EXPERIENCES



NEW-AGE ASPIRATIONS  
AGE-OLD INFLUENCES

LIVE THE FUSION LIFE  
WHERE FUTURISTIC MINDSETS EVOLVE  
FROM DEEP-ROOTED VALUES



COME ABOARD  
TO THE FUSION LIFE  
AT DADAR WEST

LIVE THE FUSION LIFE  
EMBRACE THE FINEST OF  
BOTH WORLDS



FOR THOSE WHO ASPIRE FOR THE BEST OF BOTH WORLDS COMES  
A LIVING THAT IS A PERFECT CONCOCTION OF SUPERLATIVE LIFESTYLE.

DEEP-ROOTED IN VALUES AND COMMUNITY TRADITIONS.

HERE'S RAISING A TOAST TO ONE OF

MUMBAI'S PREMIUM RESIDENTIAL LANDMARKS.

THAT MARKS THE FUSION OF THE FINEST.

UNVEILING  
**वसुधैव कुटुम्बकम्**

THE CONFLUENCE OF ELEVATED QUALITY STANDARDS.

OPTIMAL SPACE PLANNING & URBAN AMENITIES ALONG WITH

SUPERIOR NUANCES OF STYLE, TRENDS & LIFESTYLE FEATURES.

ALL, AT ONE OF MUMBAI CITY'S CENTRAL ADDRESSES - DADAR WEST.

# वर्षावत

DADAR WEST

LUXURIOUS 3 & 4 BED RESIDENCES  
WITH SUNDECKS



MAGNIFICENT HIGH RISE TOWER



GRAND DOUBLE-HEIGHT WELCOME LOBBY



MESMERISING SEA VIEWS FROM HIGHER FLOORS



LIFESTYLE GROUND, CLUB & SKY-LIFE  
INDULGENCES

THOSE WHO HAVE ARRIVED  
ARRIVE AT THE FUSION LIFE

GRAND DOUBLE-HEIGHT ENTRANCE LOBBY  
WITH VISITORS' LOUNGE





AN INSPIRING  
POINT OF VIEW

PREMIUM 3 & 4 BED RESIDENCES WITH  
MESMERISING SEA VIEWS FROM SUNDECKS  
OF HIGHER FLOORS...





ABODES THAT MARK A FUSION OF EXCLUSIVITY,  
SOLIDITY & FUNCTIONALITY.



### THE TITANIUM SUITES

DISTINGUISHED 4 BED RESIDENCES WITH  
SUNDECKS - 1,600 SQ. FT.  
4 ELEGANT BEDROOMS WITH 2 MASTER BEDROOMS



### THE PLATINUM SUITES

SUPERLATIVE 3 BED RESIDENCES WITH  
SUNDECKS - 1,175 SQ. FT.  
2 MASTER BEDROOMS & 1 BEDROOM



### THE AURUM SUITES

EXCEPTIONAL 3 BED RESIDENCES WITH  
SUNDECKS - 1,160 SQ. FT.  
2 MASTER BEDROOMS & 1 BEDROOM



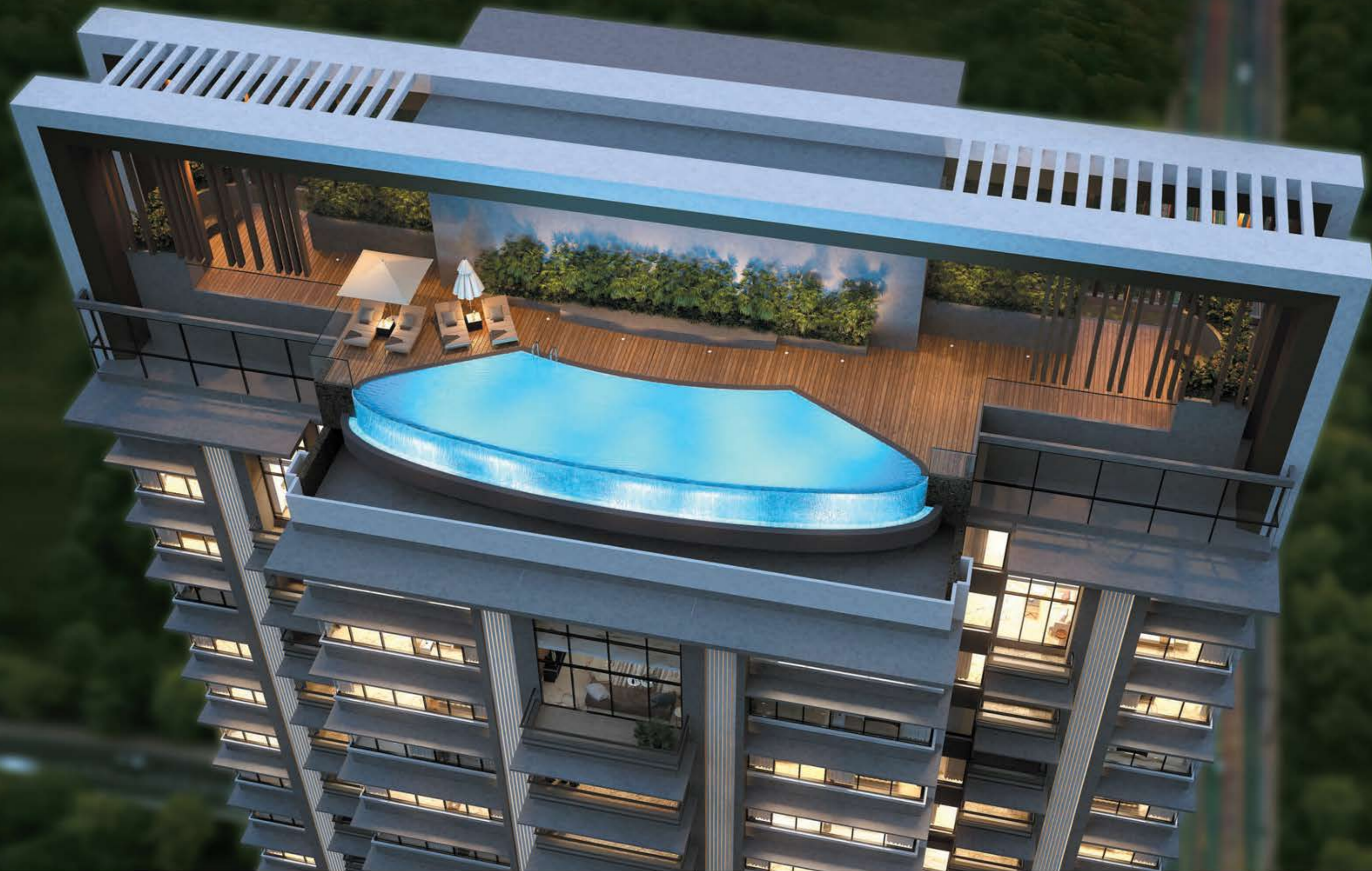
SKY-HIGH LEISURES  
GROUNDED VALUES

---

GLAM SKY-LIFE INDULGENCES  
AMIDST YOUR COMMUNITY



EXCLUSIVE SKY-LIFE INDULGENCES





IMMERSE YOUR SOUL IN ENDLESS AQUA  
OVERLOOKING WORLI-BANDRA SEA LINK

AZURE INFINITY-EDGE POOL



A group of people in formal attire are gathered around a bar. A woman in a light-colored dress is leaning over the bar, smiling. A man in a dark suit and bow tie is looking up and smiling. A woman in a dark, long-sleeved dress is looking towards the camera. In the background, another man is smiling. The scene is dimly lit, suggesting an evening setting. Overlaid on the image are several stylized lotus flowers in a reddish-pink hue, with some in the foreground and others in the background. The text is centered in the upper left quadrant.

CLASSY LIFESTYLES  
SASSY INDULGENCES

---

HIGH-END PODIUM, CLUB & GROUND LEVEL  
RECREATIONS WITH YOUR LOVED ONES



IT IS YOUR BODY,  
MAKE IT HAPPEN

UBER-MODERN GYMNASIUM WITH  
CARDIO SECTION

UNWIND WITH THE  
MAGIC OF MOVIES

MINI THEATRE WITH  
RECLINER CHAIRS





LIKE MUSIC  
FOR YOUR SOUL

YOGA & ZUMBA STUDIO

OUT HERE,  
IT IS MIND OVER MATTER

INDOOR GAMES ARENA WITH  
KIDS' GAMING ZONE

TO OPEN YOUR MIND,  
OPEN A BOOK

LIBRARY & READING ROOM

A man and a woman are walking hand-in-hand on a city street. The woman is wearing a floral dress and sunglasses, and the man is wearing a dark suit and sunglasses. The background shows a city street with buildings and a large, golden wireframe floral graphic overlaid on the scene. The text is positioned on the left side of the image.

CENTRAL LOCATION  
DIVERSE RELAXATIONS

---

DADAR WEST - STATUS LOCATION AT THE  
CONFLUENCE OF WEST & EAST

## WHERE LUXURIOUS LIVING BLENDS WITH CULTURALLY-RICH LOCATION

DADAR WEST NEEDS NO INTRODUCTION. ALMOST EVERYBODY, ACROSS AGE GROUPS, HAS FOND MEMORIES OF THIS LOCALE. FROM ITS PHOOL MARKET TO SIDDHIVINAYAK TEMPLE TO UMPTEEN EATERIES TO PLAZA CINEMA TO SAREE SHOWROOMS TO REPUTED COLLEGES... THE AREA IS BUZZING WITH ACTIVITIES AND LIFE.

ON THE OTHER HAND, THIS OLDEST PLANNED LOCATION OF SOUTH MUMBAI EXTENDS TO PRABHADEVI, LOWER PAREL, SHIVAJI PARK, MAHIM & DADAR CIRCLE. TODAY, IT HAS GROWN IN TO AN EPICENTER WITH HIGH-SOCIETIES, LIFESTYLE VENUES AND QUICK CONNECTIVITY ALONG WITH CUSTOMARY VALUE-SYSTEMS; A UNIQUE FUSION THAT MAKES IT ONE OF CITY'S MOST-COVETED, CENTRAL RESIDENTIAL LOCALES.



### RAILWAYS & METRO

DADAR METRO - 300 MTRS

DADAR RAILWAY STATION- 1.3 KMS

WADALA RAILWAY STATION- 2 KMS

MAHIM RAILWAY STATION- 2.8 KMS



### ROADWAYS & HIGHWAYS

GOKHALE ROAD - 450 MTRS

SENAPATI BAPAT MARG - 700 MTRS

EASTERN EXPRESS HIGHWAY -1.1 KMS

MAHIM-SION LINK ROAD - 4.2 KMS

BANDRA WORLI SEA LINK- 7 KMS





Images for representation purpose only

PRIDE ADDRESS CENTERED  
AMIDST A HOST OF CONVENIENCES  
& LANDMARKS

EVERYDAY COMFORTS

- TRADITIONAL MARKETS - 2 MINS WALK AWAY
- RUITA & R.A PODAR COLLEGES - 10 MINS
- DADAR CATERING COLLEGE - 15 MINS
- BOMBAY SCOTTISH SCHOOL - 15 MINS
- DON BOSCO SCHOOL - 15 MINS

HIGH-PROFILE VENUES

- DADAR CLUB - 5 MINS
- PARSII GYMKHANA - 10 MINS
- MATUNGA CLUB - 10 MINS
- PHOENIX PALLADIUM - 20 MINS
- KAMILA MILLS - 15 MINS

PROMINENT LANDMARKS

- DIAGONALLY-OPPOSITE DADAR KABUTAR KHANA
- SHIVAJI NATYA MANDIR - 5 MINS
- KOHINOOR MILL SQUARE - 5 MINS
- PORTUGUESE CHURCH - 5 MINS
- AND MANY OTHER RENOWNED LANDMARKS

LOCATION MAP





## MAGNIFICENT HIGH-RISE WITH CUTTING-EDGE AMENITIES

### PROJECT HALLMARKS

- MAGNIFICENT HIGH RISE TOWER
- LUXURIOUS 3 & 4 BED RESIDENCES WITH SUNDECKS
- MESMERISING SEA VIEWS FROM SUNDECKS OF HIGHER FLOORS
- GRAND, DOUBLE-HEIGHT ARRIVAL LOBBY
- DOUBLE BASEMENT CAR PARKING
- 4 HIGH-SPEED ELEVATORS INCLUDING 1 STRETCHER ELEVATOR
- SOCIETY OFFICE
- EARTHQUAKE RESISTANT RCC STRUCTURE
- RAIN WATER HARVESTING
- ELECTRICAL VEHICLE CHARGING POINTS
- CONVENIENTLY LOCATED AT DADAR WEST

### GROUND LEVEL AMENITIES

- VISITORS' WAITING LOUNGE
- LIBRARY / READING / STUDY LOUNGE
- LANDSCAPED GARDEN WITH KIDS PLAY AREA

### UBER PREMIUM CLUBHOUSE

- FULLY-EQUIPPED, AIR-CON GYMNASIUM
- MINI THEATRE WITH RECLINER CHAIRS
- YOGA & ZUMBA STUDIO
- OPULENT CELEBRATION HALL
- OPEN AIR LANDSCAPED PODIUM
- INDOOR GAMES ARENA WITH KIDS GAMING ZONE

### GLAMOROUS SKY INDULGENCES

- AZURE INFINITY-EDGE POOL

### INTERNAL AMENITIES

- ITALIAN MARBLE IN LIVING AND MASTER BEDROOMS
- WOODEN FINISH CERAMIC FLOORING IN BEDROOMS AND DECK
- DESIGNER VITRIFIED FLOORING IN KITCHEN AND STAFF ROOM
- 10 FT. FLOOR TO CEILING HEIGHT

### WINDOWS

- POWDER COATED HEAVY DUTY TRACK ALUMINIUM SLIDING WINDOWS

### BATHROOM

- CONCEALED PLUMBING WITH GOOD QUALITY C.P. FITTINGS
- GLAZED MARBLE FINISHED VITRIFIED TILES
- DESIGNED SANITARY FITTINGS

### 4 TIER SECURITY

- VIDEO DOOR PHONE CUM INTERCOM
- CCTV IN COMMON AREAS
- 24X7 SECURITY GUARD

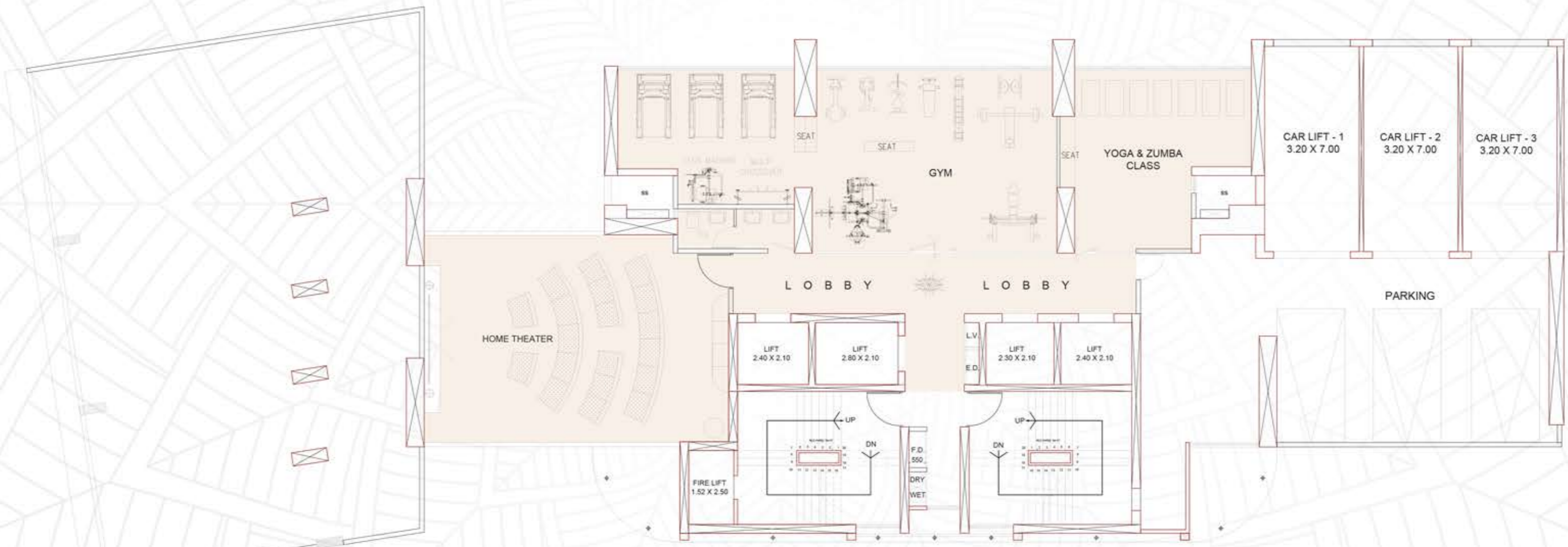
# GROUND FLOOR PLAN

90' W  
RAO BAHADUR S.K. BOLE ROAD  
SOUTH

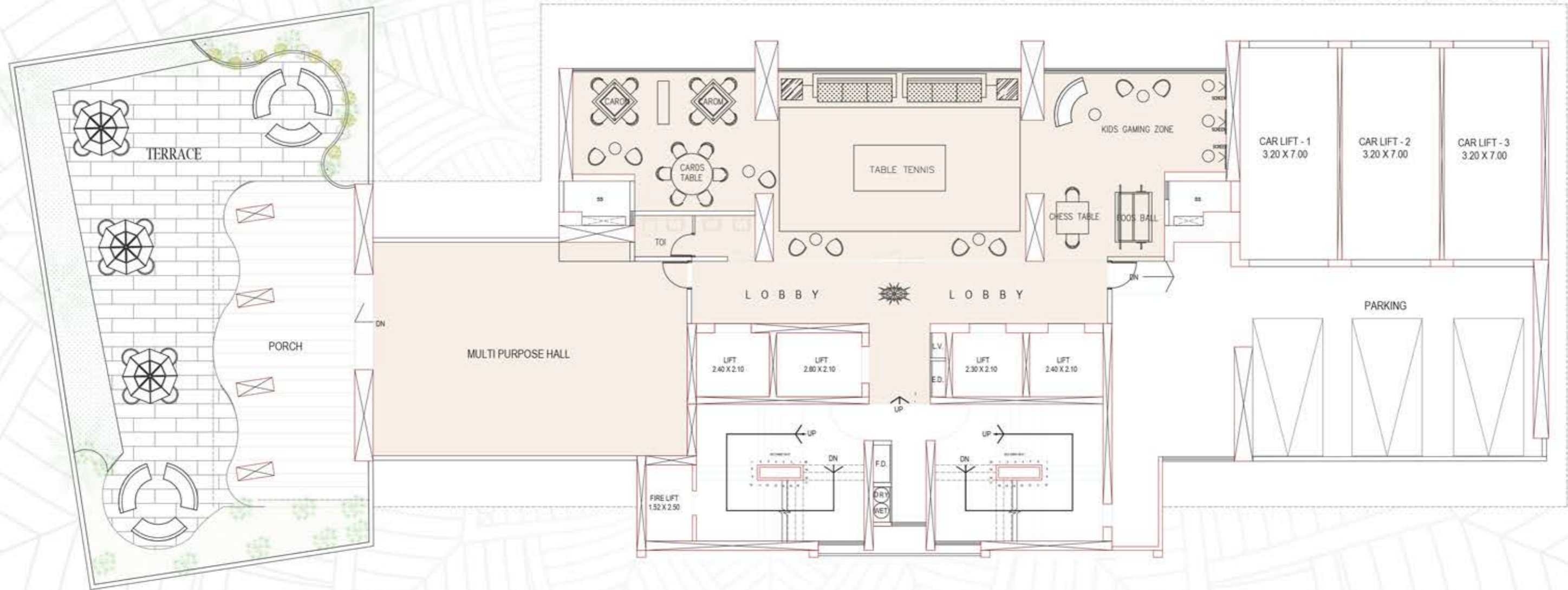




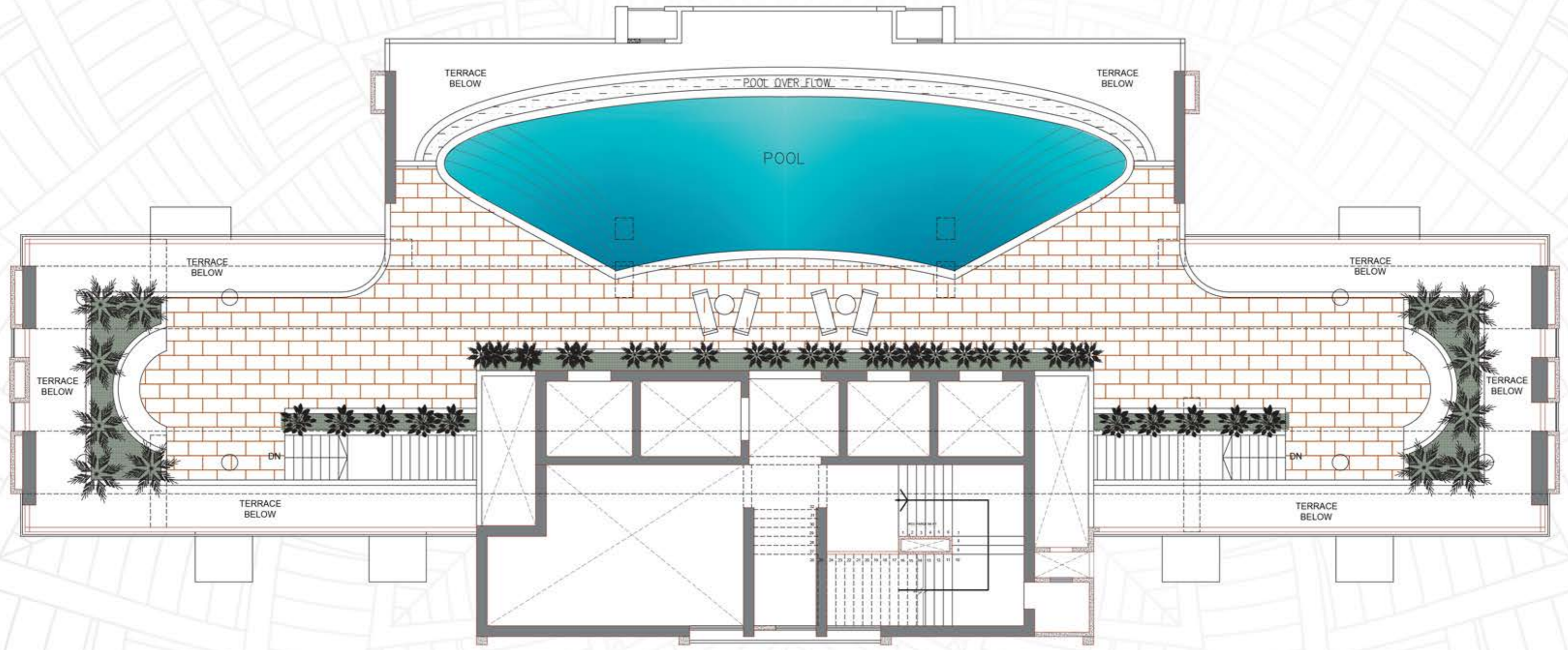
# MEZZANINE LEVEL 1



# MEZZANINE LEVEL 2

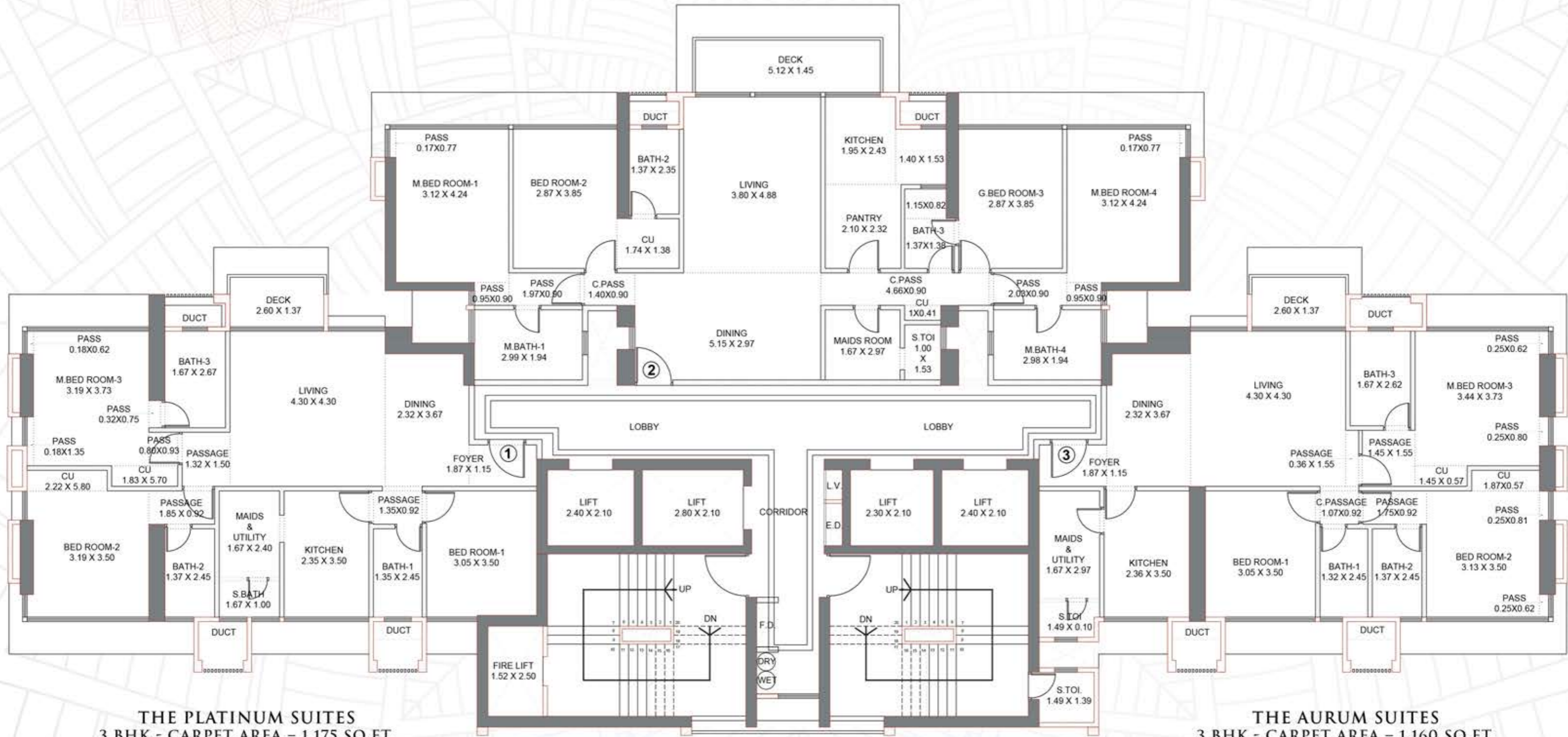


# ROOFTOP PLAN



# TYPICAL FLOOR PLAN

## THE TITANIUM SUITES 4 BHK - CARPET AREA = 1,600 SQ.FT.



## THE PLATINUM SUITES 3 BHK - CARPET AREA = 1,175 SQ.FT.

## THE AURUM SUITES 3 BHK - CARPET AREA = 1,160 SQ.FT.



A PENCHANT FOR QUALITY  
A DESIRE FOR PREMIUM LIFESTYLE

'CHINTAMANI GROUP', A DIVERSIFIED FAMILY ORGANISATION HAS EARNED ITS STRIPES IN BUSINESSES SUCH AS REAL ESTATE, TEXTILES AND FILM STUDIOS THROUGH PASSION AND COMMITMENT.

THE PROMOTER, WITH ALMOST 3 DECADES OF EXPERIENCE IN REALTY BUSINESS, NOW ENDEAVOURS TO VENTURE OUT WITH THE CHINTAMANI GROUP TO NEW ALTITUDES OF SUCCESS BY CREATING PREMIUM, LUXURY LANDMARKS ACROSS MUMBAI CITY.

COMPLETED LIFESTYLES WITH  
HAPPY CUSTOMERS

CHINTAMANI GOLD PLAZA  
Zaveri Bazaar

THE SOUTH BAY  
Hughes Road

BPL HOUSE  
Manmala Tank Road, Mahim West

PADMA NAGAR  
Andheri Kurla Road, Andheri East

CHINTAMANI HERITAGE  
Off Andheri Kurla Road, Andheri East

CHINTAMANI PLAZA  
Andheri Kurla Road, Andheri East

CHINTAMANI CLASSIQUE  
Sir Visweshwar Colony, Pahadi Village,  
Goregaon East

CHINTAMANI AVENUE  
Off. Western Express Highway, Dindhoshi,  
Goregaon East



MORE THAN 5 LAC SQ. FT. OF  
DEVELOPING EXCELLENCE

SUCCESSFULLY COMPLETED  
8 PLUS PROJECTS



